



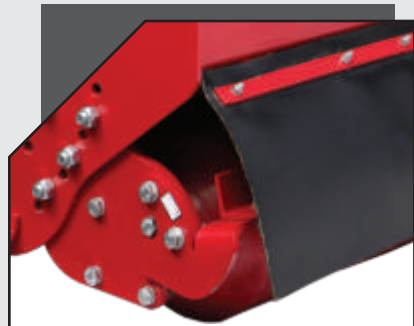
MULCHER

DESCRIPTION

A Mulcher is used to shred crop residues or grass to finer degree. Further, this leftover can be utilized as mulch. Primary usage includes shredding and mulching of orchard prune, grass, and vineyards to increase soil fertility.



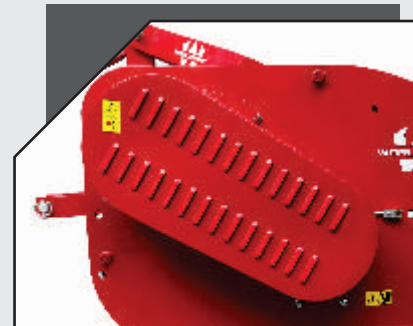
FEATURES



REAR ROLLER WITH HEIGHT ADJUSTMENT



HEAVY DUTY FRAME



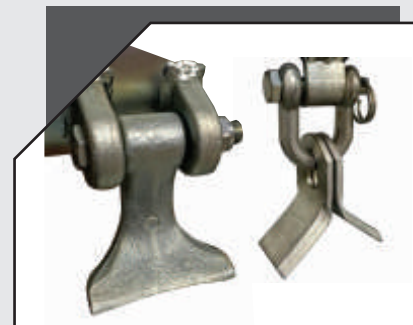
BELT TYPE TRANSMISSION



HEAVY DUTY GEAR BOX



DOUBLE SHIELDED STABLE STRUCTURE



AVAILABLE IN BOTH Y TYPE AND HAMMER BLADES

TECHNICAL SPECIFICATIONS

		Mulcher			
		WTM5	WTM6	WTM7	WTM8
	Model	WTM5	WTM6	WTM7	WTM8
	Working Width (mm)	1575	1880	2185	2490
	Overall width (mm)	1850	2155	2460	2765
Speed of flail rotary, (RPM)		2240 at 540 tractor PTO RPM			
No. of row of flail sets on rotor		2			
No. of row of blade sets on rotor		16	18	20	22
Type of Blades		Inverted Gamma type/ Hammer type			
Rotor drum diameter (mm)		Inverted gamma type-673 Hammer type-580			
No of rows of blades on the concave		3 (only for paddy straw)			
	Approx Weight (Kg)	580	652	702	750
	Main frame sheet thickness (mm)	5			
Side plates sheet thickness (mm)		10			
Trailing board sheet thickness (mm)		5			
Rear end following mechanism		Press Roller/Wheel			
	Hitching Pyramid	Cat II			
	No. of belts	4			
	Tractor Power (HP)	45	50	60	75

*Data and specifications are subject to change without any advance notice due to continuous product improvement and development.

BENEFITS AND ADVANTAGES

- ⊙ It is highly compatible to shred vineyards & orchard pruned materials, grass, bushes, crop residues.
- ⊙ It gives higher productivity with least maintenance.
- ⊙ Bio mulch helps in increasing the soil fertility to great extent which helps in high yield.
- ⊙ Its rotor is designed that it can rotate in high rpm with low vibrations.
- ⊙ Heavy duty frame helps in working at different conditions.
- ⊙ Belt type transmission is available with external adjustments.
- ⊙ Both Y type & Hammer blades are available